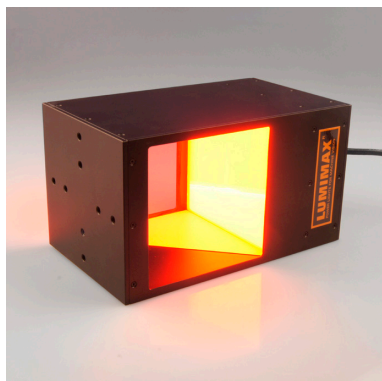


Coaxial Flash Light ES100FL - Technical data



- LED Coaxial Light for flash operation
- active light field 100 mm x 100 mm
- 196 high performance 5 mm LEDs
- applicable as a coaxial, homogeneous incident illumination
- integrated illumination controller
- brightness can be regulated internally (potentiometer) or externally with a VC analogue input
- adjustable flash times up to 220 µs
- different trigger modes
- robust industrial model, Aluminium casing, IP40
- 150 mm cable with an M16 12-pin plug
- drag chain connection cable with an M16 12-pin socket in different lengths available as accessory ↻ [please note page 211 of the main product catalogue](#)

LIFETIME
75.000h+

x=0,31
y=0,31

470nm

525nm

625nm

Strobe / Flash

CONTROLLER
INSIDE



Price list: page 359 of the main product catalogue



T1-Adapter cable: starting on page 212 of the main product catalogue

With the following table you can assemble your desired type of lighting:*

* A detailed product key explanation can be found on [Page 4](#) of the main product catalogue.

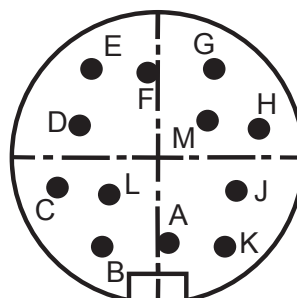
Available illumination variants

Model	Illumination colour	Brightness regulation	Trigger	Flash time
ES100FL	R W B G	Potentiometer, optional VC	SPS TTL	100 220

Operation mode	Flash	
Operation voltage	19...30 V DC	wide range voltage input
Max. current	1,3 A	at 24 V
Trigger modes	TTL / SPS	TTL: rising slope at trigger input, min. 2,8 V DC, max. 30 V DC SPS: rising slope at trigger input, min. 15 V DC, max. 30 V DC
Flash times	10 - 100 µs / 20 - 220 µs	adjustable with potentiometer, max. flash frequency 100 Hz or 35 Hz
Brightness regulation	Potentiometer / VC	Potentiometer: 0...100 % (deactivated VC - models) or VC: 0...100 % when connected to a voltage of 2...10 V DC on the VC analogue input (potentiometer deactivated)
Ambient temperature	5 - 45 °C / 37 - 113 °F	non-condensing
Weight	2,0 kg	
Protection class	IP 40	
Connection	M16 12-pin plug	150 mm drag chain cable with an M16 12-pin plug, IP67

Pin arrangement M16 plug

A+K	white	GND	GND Operation voltage
B+L	brown	U _b	Operation voltage
C	green	NC	NC
D	yellow	VC	Brightness regulation 2...10 V DC
E	grey	NC	NC
F	pink	+Trigger SPS / TTL	SPS >15 V / TTL >3 V, rising slope
G	blue	GND Trigger	GND trigger circuit
H	Shield	Shield	Shield connection
J	nc	NC	NC
M	nc	NC	NC



Coaxial Flash Light ES100FL - Technical drawing

