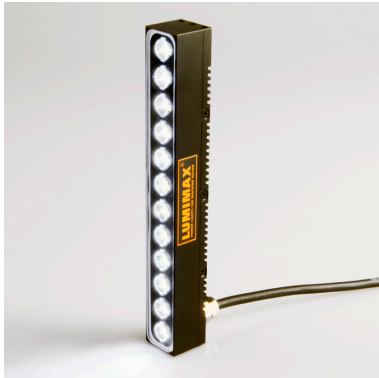


LED Mini Bar Light LSB150 - Technical data



- LED Mini Bar Light for continuous- / switch operation
- fast, load free switch input
- 12 High Power LEDs for a very bright area of interest illumination
- Smart aluminium housing ideally for integrating into a restricted installation environment
- Protection class IP67 enables use in difficult environmental conditions
- Integrated light controller enables constant lighting conditions which lead to reliable Machine Vision processes
- Exchangeable LensKits which leads to an individual adaption of the illumination situation according to the application
- Mounting system for LSB – assemble up to 4 Bar Lights in a Area arrangement (Illumination angle from Brightfield to Darkfield is adjustable)
- 400 mm cable with an M8 3-pin plug
- Connection cable with M8 3-pin socket in various lengths available as additional equipment (limited drag chain compatibility)

With the following table you can assemble your desired type of lighting:*

* A detailed product key explanation can be found on [Page 4](#) of the main product catalogue.

Available illumination variants

Model	Radiation angles (°) Ancillary lenses	Illumination colour
LSB150	16	R
	23	W
	44	B
	48x19	G IR850

Operation mode	Continuous / switch	
Operation voltage	19...30 V DC	wide range voltage input
Max. current	0,5 A	at 24 V
Switch	SPS	+ ON/OFF SPS - load free switch input, rising slope minimum 15 V DC, maximum 30 V DC, 200 µs switch-ON delay, red status LED
Ambient temperature	5 - 45 °C / 37 - 113 °F	
Weight	160 g / 0.35 lbs	
Protection class	IP67	
Connection	M8 3-pin plug	400 mm drag chain cable with an M8 3-pin plug, IP67 (limited drag chain compatibility)

Pin arrangement M8 plug

1	brown	U _B	Operation voltage	
3	blue	GND	GND Operation voltage	
4	black	+ ON/OFF SPS	Switch input, SPS > 15 V DC	

LIFETIME
50.000h+

x=0,31
y=0,31

470nm

528nm

625nm

850nm

CONTINUOUS

SWITCH



CONTROLLER INSIDE



Price list: [page 366 of the main product catalogue](#)



Mounting solution:
[starting on page 217 of the main product catalogue](#)

LED Mini Bar Light LSB150 - Technical drawing

